



2014 OPTIMIST National Championships

MANLY SAILING CLUB - WHANGAPARAOA



The 2014 Toyota NZIODA Optimist National Championship

Thursday 17th April to Tuesday 22nd April 2014
Manly, Whangaparaoa Peninsula, Auckland.

The Organising Authority is Manly Sailing Club in association with
The New Zealand International Optimist Dinghy Association

NOTICE OF RACE

1. RULES

- 1.1. The regatta will be governed by the 'rules' as defined in the Racing Rules of Sailing 2013-2016.
- 1.2. The Yachting New Zealand Safety Regulations Part 1 will apply.
- 1.3. Rule Appendix P, *Special Procedures for Rule 42*, will apply as amended by the Sailing Instructions.
- 1.4. Rule Appendix G3, *Chartered or Loaned Boats*, will apply.
- 1.5. For protests where only a rule of Part 2, *When Boats Meet*, or rule 31, *Touching a Mark*, is alleged to have been broken, an arbitration hearing may be offered prior to any formal protest hearing.
- 1.6. Racing rules will be changed in the Sailing Instructions in accordance with rule 86, *Changes to the Racing Rules*, as follows;

Boats will NOT be exempt from displaying a protest flag. This changes rule 61.1(a), *Informing the Protestee*.

Boats failing to finish within 20 minutes after the first boat sails the course and finishes may apply to be scored SRS, "Still Racing Score". This changes rules 35, *Time Limit and Scores*, and A4, *Low Point System* and A5, *Scores Determined by the Race Committee*.

The changes will appear in full in the sailing instructions. The sailing instructions may also change other racing rules.

2. ADVERTISING & BOW NUMBERS

- 2.1. Boats may be required to display bow numbers and advertising chosen and supplied by the Organising Authority

3. ELIGIBILITY AND ENTRY

- 3.1. The 2014 Toyota NZIODA Optimist National Championship is open to all boats of the Optimist class that have a valid measurement certificates and have passed the regatta registration and scrutinising process.
- 3.2. To be eligible to compete each competitor shall be a financial member of a club recognised by their national authority and shall be a member of the national optimist association in their country of residence. In addition each New Zealand competitor shall be a financial member of a club recognised by Yachting New Zealand and a financial member of NZIODA.

- 3.3. This Championship incorporates the New Zealand representative selection trials. The Trials are open only to New Zealand Nationals or Residents in New Zealand. To be able to compete in the Trials each entrant shall be:
- a) A financial member of NZIODA.
 - b) A financial member of a yacht club affiliated to YNZ.
 - c) Eligible for a NZIODA representative team.

Note Eligibility guidelines from IODA:

A sailor who has represented one country at an IODA World or Continental Championship shall not represent another member country except in cases of alteration of residence, which cases shall be approved by the NZIODA committee in consultation with the IODA executive.

Attention is drawn to the ISAF regulations to the ISAF World Youth Championship (ISAF regulation 24.5). These regulations clarify the term permanent or bona fide resident for those competitors who may be resident in New Zealand but who are not Nationals of New Zealand.

If a sailor does not comply with these guidelines but wishes to be considered for National representation then application may be made to NZIODA for dispensation. These applications must be received in writing by 1st April 2014. The final decision/ruling on a sailor's eligibility to represent New Zealand at the World Championships or other international Optimist regattas will be the responsibility of the NZIODA committee who may refer it to the IODA executive.

- 3.4. Sailors wishing to be eligible for selection in a NZIODA representative team shall use foils which measure under the 2004 or later IODA class rules.
- 3.5. Sailors who meet the NZIODA Green Fleet criteria and have not sailed in an open fleet regatta comprising more than 40 yachts are invited to participate in a separate fun event for Green Fleet sailors. Entry requirements for the Green Fleet are as stated in a separate Green Fleet Notice of Race. Green Fleet racing will be on a separate course.
- 3.6. The regatta is open to all competitors born in the year 1999 or later. Total entrants in the Open Championship are limited to 280 boats. Earlier entries will be given preference. Additional entries may be accepted at the discretion of NZIODA.
- 3.7. There is a limit of 30 International Sailors with a maximum of 5 from any one country. Additional International competitors may be accepted at the discretion of NZIODA.
- 3.8. New Zealand competitors will need to provide their NZIODA membership number with their entry. Overseas competitors will need to provide proof of age and club membership with their entry. A photocopy of birth certificate or passport is acceptable.
- 3.9. Entries will be accepted until the normal closing date of Monday 31st March 2014 :

One Competitor in Open Fleet	\$175
One Competitor in the Green Fleet	\$105
Each additional Competitor from the same family	\$25 discount for each additional sailor
Late Entry fee	\$50 per sailor

- 3.10. Entries should be made using the attached Entry Form <http://www.sportsground.co.nz/2014optimistnationals/99728/> and sending it together with the required entry fee to: 2014 Optimist National Championship, Manly Sailing Club, PO Box 430 Whangaparaoa, Auckland 0932 Or emailed to secretary@manlysailingclub.org.nz
- 3.11. Late entries, accompanied by an additional late entry fee of \$50 may be accepted at the Race Committee's discretion until 1500 hours on Monday 14th April 2014; however no event pack can be guaranteed.
- 3.12. Each boat shall present a valid measuring certificate at registration and in addition, equipment inspection will be made to check compliance with class rules and the Yachting New Zealand Safety Regulations.
- 3.13. Equipment inspection requirements are:

- a. All boats and equipment to be used in the contest must have been measured and have a measurement certificate. Pre IOD 95 hulls can be measured using the NZIODA limited measurement form and be issued with a NZIODA Measurement Certificate.
- b. Equipment to be used in the contest must be nominated on the entry form (only one of each item).

Hull ISAF plaque or receipt number. This is usually on the thwart of the boat and recorded in the measurement book. Hull weight may be checked during registration or spot – checks during the regatta.

Sail button number. This is not the sail number but is the number stamped on the small green or red disk fixed near the tack of the sail. If you do not have a sail button, these are available through NZIODA.

Mast, Sprit, Boom, Centreboard and Rudder. Measurer’s serial number from the measurement certificate of each of these items. No measured equipment may be changed during the regatta without first gaining written approval from the Regatta Measurer or the Race Officer. All replacement equipment must be measured. Retrospective approvals maybe given for equipment replaced on the water between races.
- c. Entries will only be accepted from boats that have been previously measured as set out above. Apart from spot checks and substituted equipment, no initial measuring will take place at the regatta.

4. SCHEDULE OF EVENTS

4.1.

Event	Day	Time or time of first warning signal	Number of Races
Registration	Thursday 17 th April	1000 to 1700	
Competitors’ Briefing	Thursday 17 th April	1700	
Support Boat Briefing	Thursday 17 th April	1730	
Patrol and Official Boats Briefing	Thursday 17 th April	1800	
Racing	Friday 18 th April	1100	3 races - Qualifying Series
	Saturday 19 th April	1100	3 races - Qualifying Series
	Sunday 20 th April	1100	3 races - Qualifying Series
	Monday 21 st April	1100	3 races - Final Series
	Tuesday 22 nd April	1000	3 races - Final Series

- 4.2. No practice race is scheduled.
- 4.3. 15 races are scheduled for the championship.
- 4.4. No more than four races will be sailed on any day.
- 4.5. Prize giving will be held as soon as possible after racing is complete.
- 4.6. On Tuesday 22nd April, the last day of the regatta, no warning signal will be made after 1500.

5. SAILING INSTRUCTIONS

- 5.1. The Sailing Instructions will be available on the regatta website www.manlysailingclub.org.nz from the 10th April 2014 and at registration.

6. RACING AREA

- 6.1. The regatta will be based at Manly Sailing Club, Big Manly Beach, Whangaparaoa Peninsula, Auckland.
- 6.2. The racing area will be in open water of Polkinghorne’s Bay and the waters north of Manly Beach. Indicative racing area is shown in Attachment A.

7. COURSES TO BE SAILED

- 7.1. The course will be an outer loop trapezoid with the finish line at the end of the second windward leg and with a gate at mark 3. If IODA decides to change the course for the 2014 or 2015 World Championship the course used at this regatta may be changed to the new IODA course.

8. FORMAT

- 8.1. The regatta will consist of a Qualifying Series followed by a Final Series.
- 8.2. If fewer than four races have been completed by the end of Sunday 20 April then Monday 21 April will be used exclusively for Qualifying Series races.
- 8.3. If fewer than three races have been completed by the end of Monday 21 April then Tuesday 22 April will be used exclusively for Qualifying Series races.
- 8.4. A Qualifying Series race will not count until all qualifying fleets have completed that race.

9. SCORING

- 9.1. A boat's score will be based on their finishing position in their fleet.
- 9.2. Five races are required to constitute a championship.
- 9.3. For the purpose of determining final series fleets one race score will be excluded from the Qualifying Series
- 9.4. For the purpose of calculating overall places
- a) When fewer than six races have been completed a boats series score will be the total of her race scores.
 - b) When from six to nine races have been completed a boats series score will be the total of her race scores excluding her worst score.
 - c) When ten or more races have been completed a boats series score will be the total of her race scores excluding her two worst scores except only one race score may excluded from the final series races.
- 9.5. The Qualifying Series races and Final Series races will count for total points in the championship.

10. PRIZES

- 10.1. Spot Prizes will be presented to those in attendance at a daily prize giving.
- 10.2. The following trophies will be awarded

1 st Open Championship	Open Event Trophy
1 st National Championship	Ralph Roberts Trophy
2 nd National Championship	Kohimarama Trophy
3 rd National Championship	Harken Trophy
1 st Female competitor	Judd Family Trophy
1 st Sailor in their first nationals	Worser Bay Trophy
1 st South Island competitor	Toyota Trophy
Notable Sportsmanship	Sportsmanship Trophy
Sailor finishing in median position	Eaglestone Trophy
National Club's Cup	Placemakers Trophy

11. CHARTER BOATS

- 11.1. Optimist charter boats will only be directed through NZIODA and the regatta organisers. Boats may only be chartered through a New Zealand based company.

The preferred suppliers for this regatta are:

Keith Elliott at **Sail One**, 29 Leighton St, Grey Lynn 1021, Auckland,

Phone: 0800 724 5663, Email: sailone@sailone.co.nz, Web: www.sailone.co.nz

Andrew Brown at **Force Racing**, Auckland

Phone: 027 222 5159, Email: andrew@forceracing.co.nz, Web: www.forceracing.co.nz

12. PHOTOGRAPHY CONSENT

- 12.1. By entering the Championships competitors accept that they may be photographed and/or videotaped participating in the race and/or using the Championship facilities and they consent to the taking of such images and to the use, reuse, publication and republication of such images in any media, in conjunction with the competitors name or not, without compensation and without the competitors approval of such images or any use thereof.

13. TEAM SUPPORT BOATS AND COACHES MEETING AND TEAM LEADERS MEETING

- 13.1. There will be Coaches and Team Leaders meetings each morning. The objective of the meetings are to receive feedback from the coaches on the regatta organisation, exchange view points and inform the coaches about the race committee's intentions for the day and regatta organisation in general.
- 13.2. Team and individual support boats will be allowed.
- 13.3. Support boat and rescue boat crew representatives shall attend a briefing on the afternoon of Thursday 17th April
- 13.4. Support boats and rescue boats must be registered with the organising authority using the registration forms.

14. INSURANCE

- 14.1. Each participating boat shall be insured with valid third-party liability insurance with a minimum cover of NZD300,000 per incident or the equivalent. Sailors should enquire if their home and contents insurance provides them with this cover.

15. DISCLAIMER OF LIABILITY

- 15.1. Competitors participate in the regatta entirely at their own risk. See rule 4, *Decision to Race*. The organizing authority will not accept any liability for material damage or personal injury or death sustained in conjunction with or prior to, during, or after the regatta.

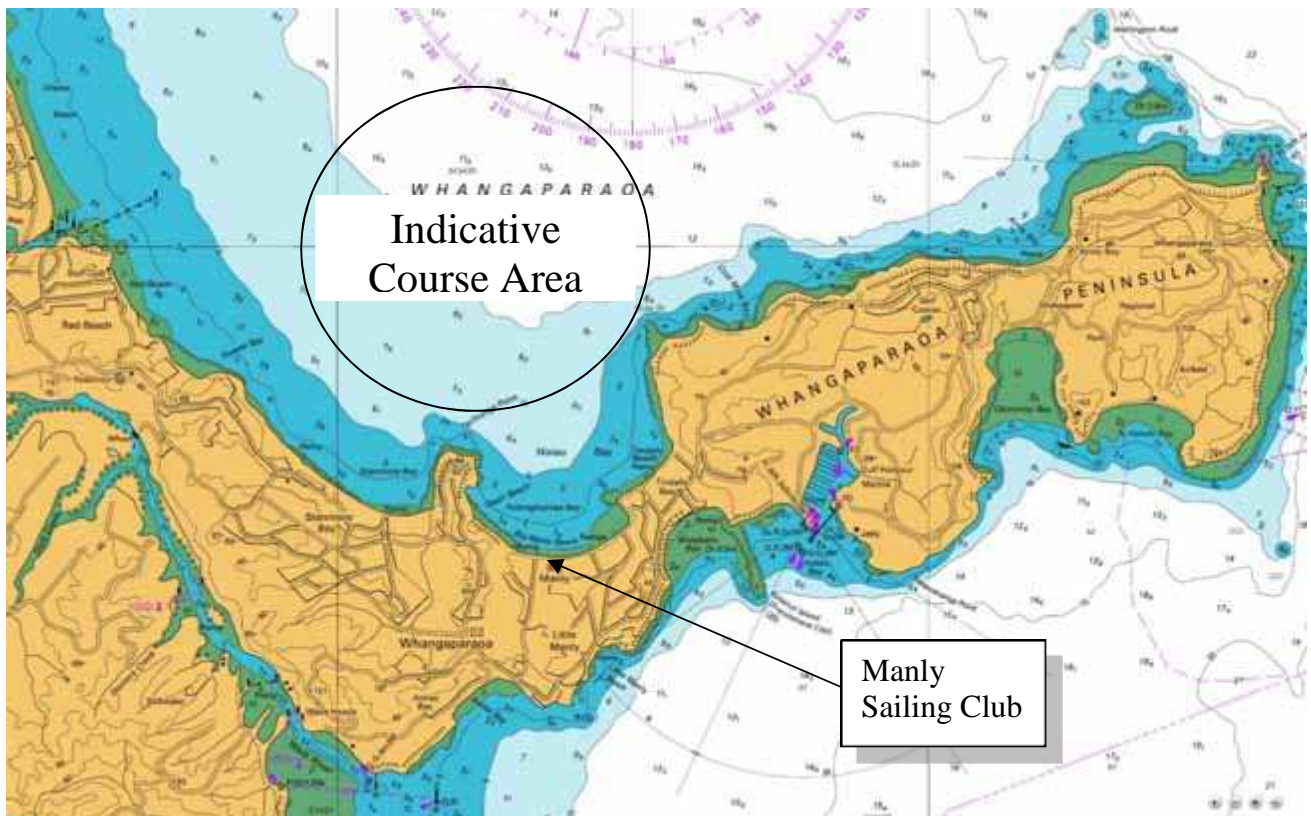
16. FURTHER INFORMATION

For further information:

Web site: www.sportsground.co.nz/2014optimistnationals

Manly Sailing Club Regatta Contact
Sean Paterson
Email: seanpaterson@slingshot.co.nz
Phone: 09 428 2182 / 021 0230 4235

NZIODA Class President: Angus Haslett
Postal: NZIODA, PO Box 1526, Auckland
Email: angus.h@xtra.co.nz
Phone: 09 575 1541



The following is not part of the Notice of Race

PRE NATIONALS REGATTA

Manly Sailing Club will be running a pre-Nationals regatta on the weekend before Easter the 12th and 13th of April.

CLUB TEAM RACING REGATTA

There will be a club team racing regatta on Wednesday 16th April, with a reserve day on Thursday 17th.

NZIODA AGM

The NZIODA AGM will be held after racing on the evening of Saturday 19th of April.

ACCOMMODATION

For detail of accommodation see:

Regatta website; <http://www.sportsground.co.nz/2014optimistnationals/91874/>

<http://www.tourism.net.nz/region/auckland/auckland---whangaparaoa>

<http://www.holidayhouses.co.nz/Manly.asp>

<http://www.bookabach.co.nz/baches-and-holiday-homes/search/locale/whangaparaoa-peninsula>

<http://www.jasons.co.nz/whangaparaoa/accommodation>